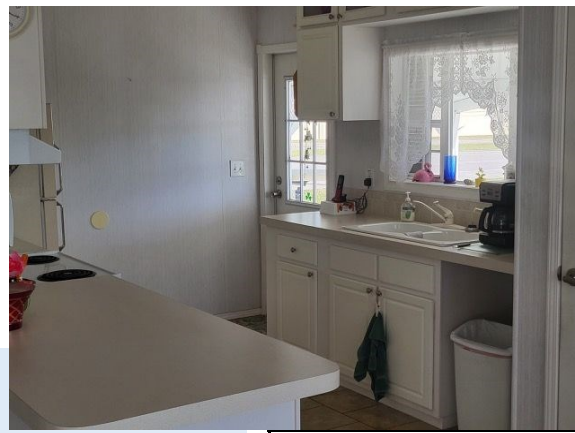


201 Palm

2005 Double wide-24x58, Built by Scott Bilt Home

Furnished, 2 Bedrooms, 2 baths, carport, shed, patio/porch, Waterfront (Across the street), roof replaced in 2022, A/C replaced 2019



\$160,000.00

List price does not include the min 5/max 16 purchase of shares @ \$1,000.00 per share.

Maintenance Fees Include Water, Sewer, Trash Pickup, Lawn Care, Use of Common Facilities (Pool, Clubhouse, Activities, Shuffleboard Courts, Bocce)
Wi-Fi Is Available in the Clubhouse Lanai Area.

**Interview w/background check required prior to closing

Maintenance Fees Based on Shares Purchased

Shares	On Water	Off Water
5 = \$5,000	\$304	\$299
6 = \$6,000	\$295	\$290
7 = \$7,000	\$286	\$281
8 = \$8,000	\$277	\$272
9 = \$9,000	\$268	\$263
10 = \$10,000	\$259	\$254
11 = \$11,000	\$250	\$245
12 = \$12,000	\$241	\$236
13 = \$13,000	\$232	\$227
14 = \$14,000	\$223	\$218
15 = \$15,000	\$214	\$209
16 = \$16,000	\$205	\$200

As of 7/1/2023